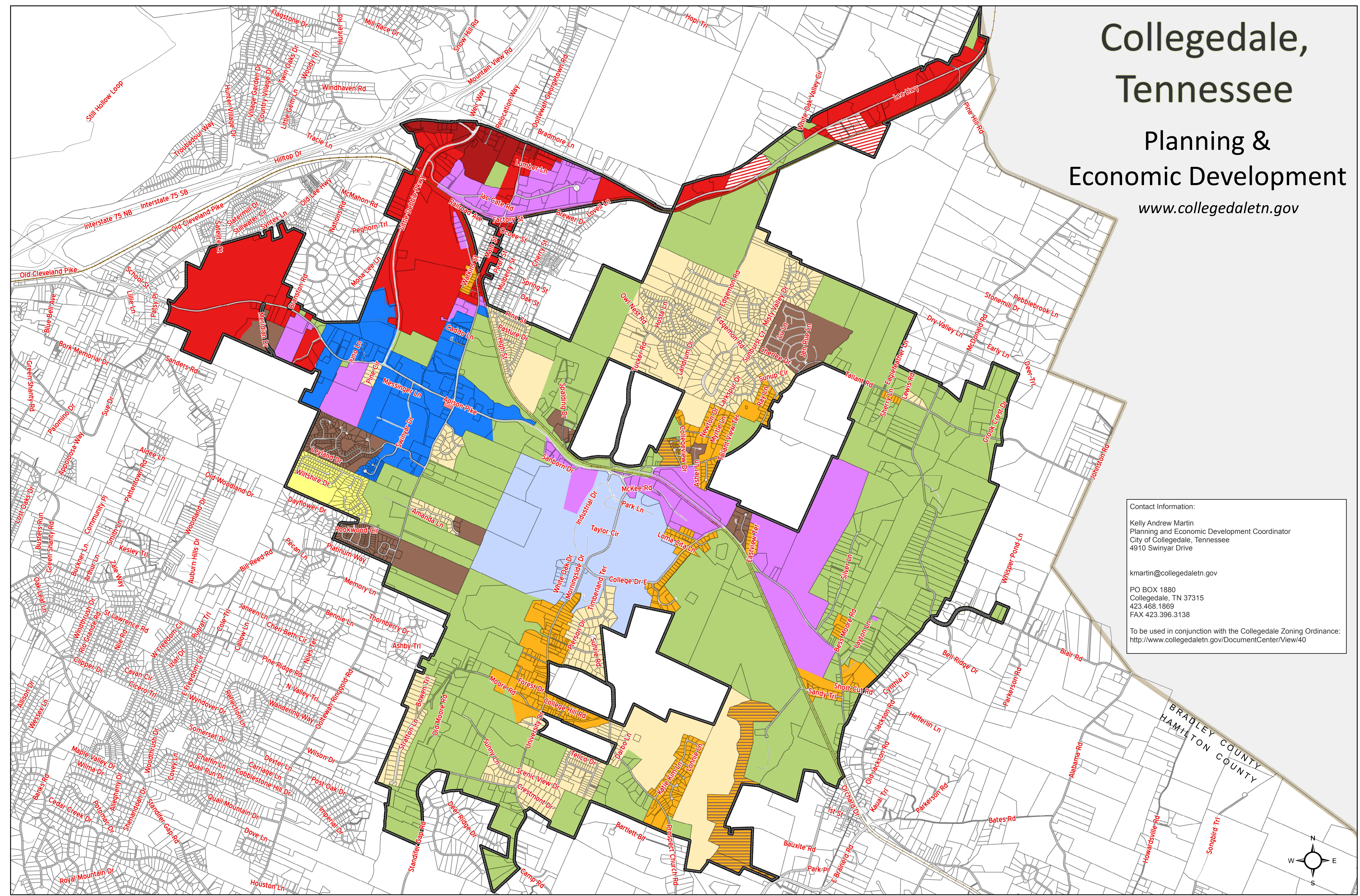


Collegedale, Tennessee

Planning & Economic Development

www.collegedaletn.gov

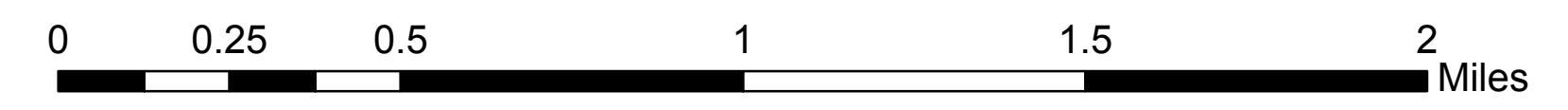


Contact Information:
 Kelly Andrew Martin
 Planning and Economic Development Coordinator
 City of Collegedale, Tennessee
 4910 Swinyar Drive

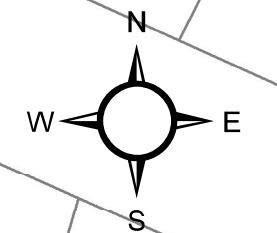
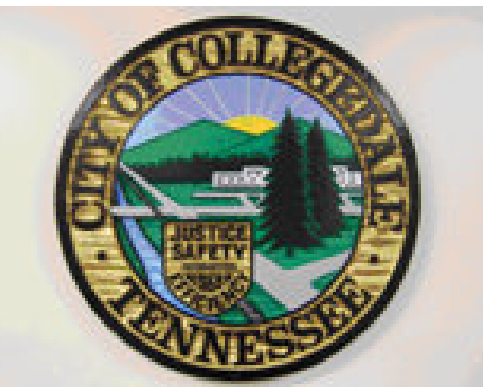
kmartin@collegedaletn.gov
 PO BOX 1880
 Collegedale, TN 37315
 423.468.1869
 FAX 423.396.3138
 To be used in conjunction with the Collegedale Zoning Ordinance:
<http://www.collegedaletn.gov/DocumentCenter/View/40>

Map Legend

- | | | | | |
|--------------------|--------------------------------|---------------------------------|--|-------------------------------|
| Rail Line | Zoning Classification | C-3 Interchange Commercial | PRD Planned Residential Development Overlay | R-3 Multi-Family Residential; |
| Corporate Boundary | AG-Agricultural | I-1 Industrial | R-1-H High Density Single Family | U-1 University District |
| Parcel Boundary | C-1 Neighborhood Commercial | MU-BC Mixed Use-Business Center | R-1-L Low Density Single Family | |
| | C-2 Shopping Center Commercial | MU-TC Mixed Use Town Center | R-2 Low Density Single-Two Family Residential; | |



Map Date: May 10, 2013
 Data Sources: Hamilton County Geographic Information Systems; City of Collegedale Department of Planning & Economic Development.
 Information herein is believed to be correct, however no warranty is made as to the suitability of the map for your intended purpose.



BRADLEY COUNTY
 HAMILTON COUNTY